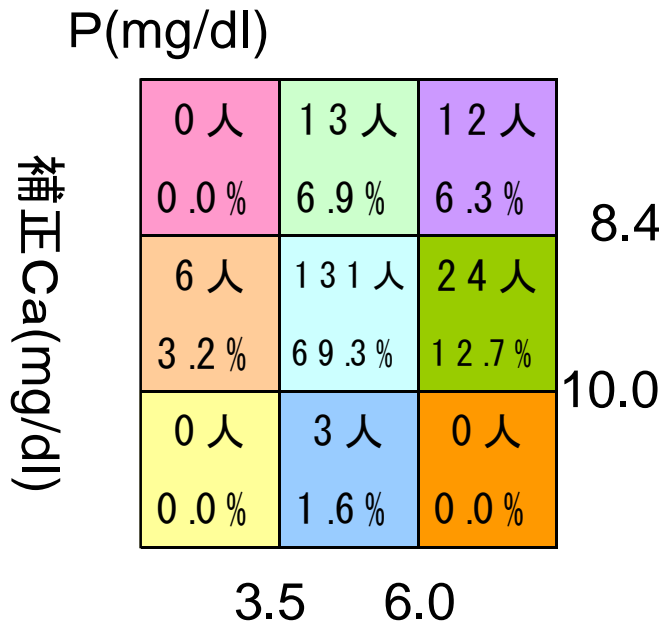


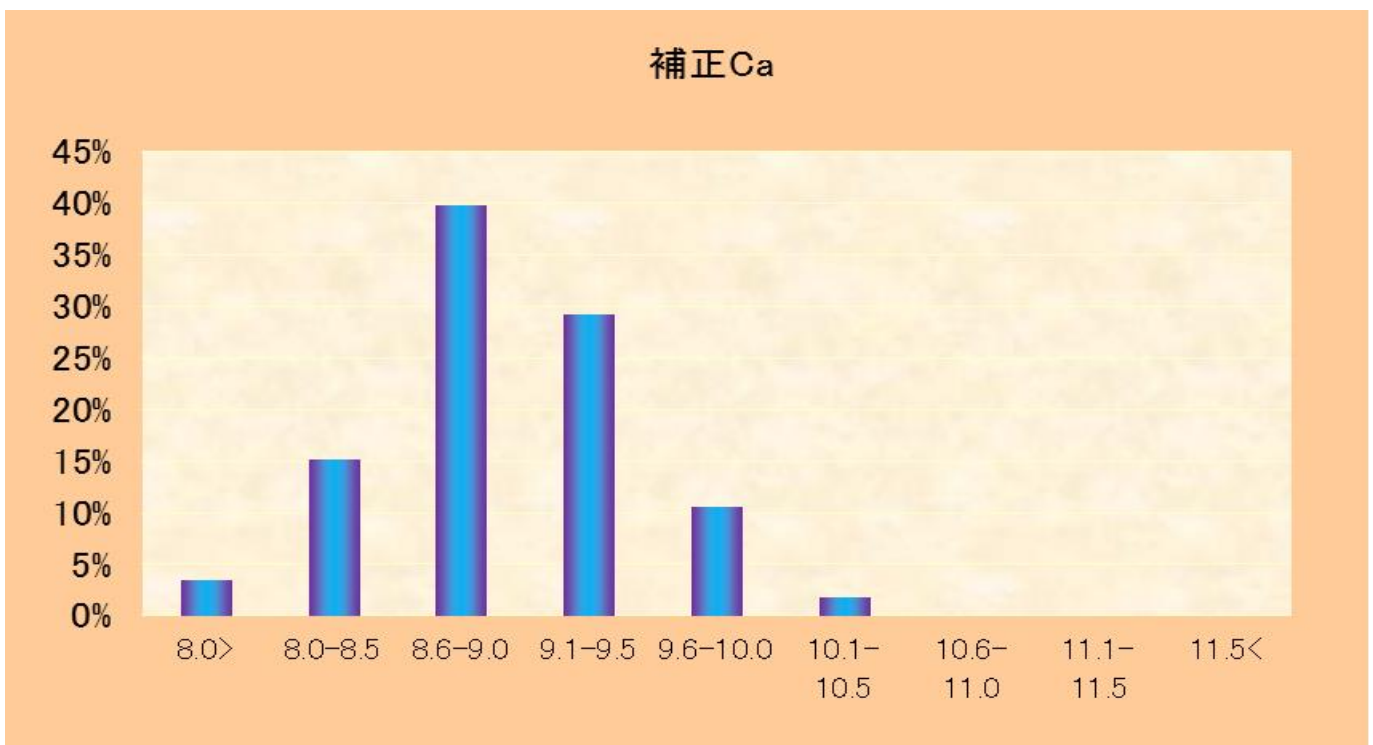
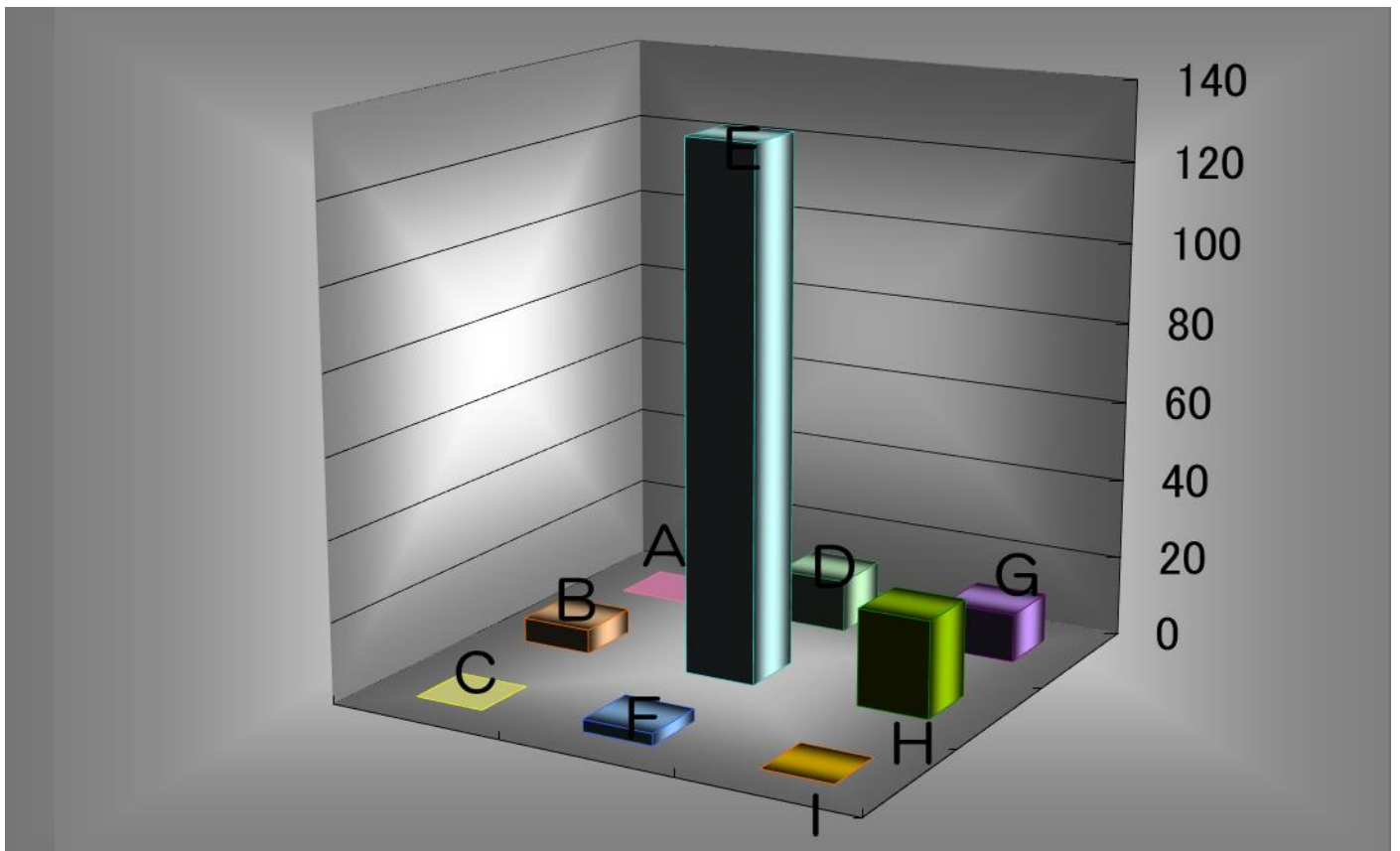


当院における、Ca、P、PTH (2019年)

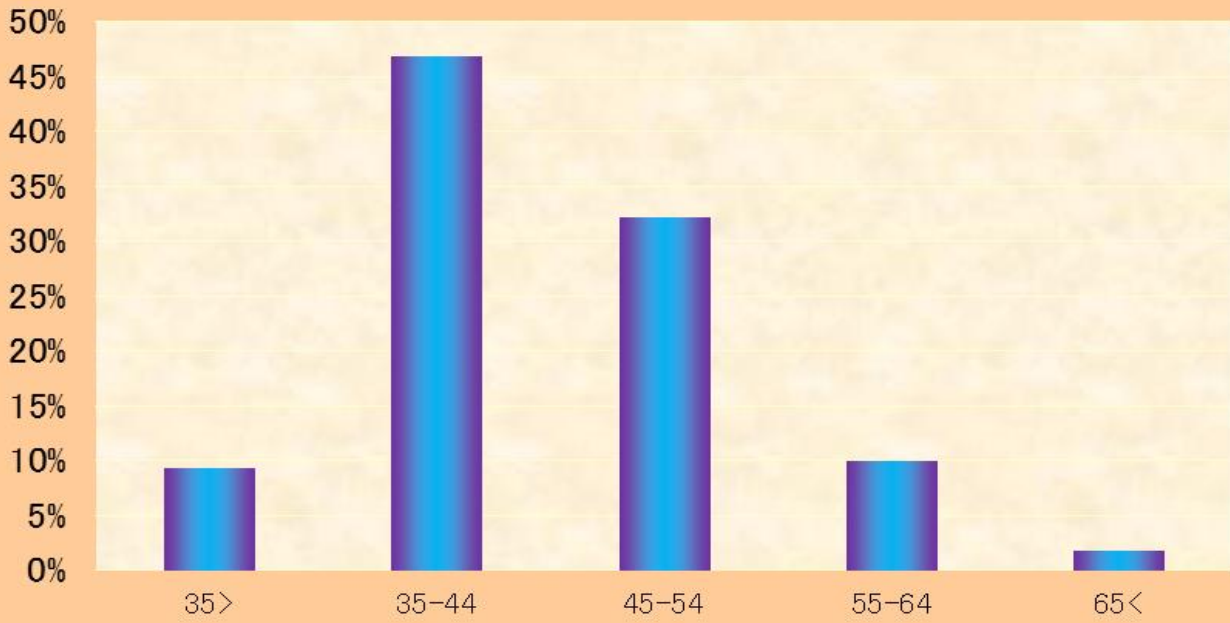
ガイドライン table				規定値		Group	人数	グループ/全体
		P		Ca	P	A	0	0.0%
	A	D	G	8.4	3.5	B	6	3.2%
Ca	B	E	H	10.0	6.0	C	0	0.0%
	C	F	I			D	13	6.9%
						E	131	69.3%
						F	3	1.6%
						G	12	6.3%
						H	24	12.7%
						I	0	0.0%



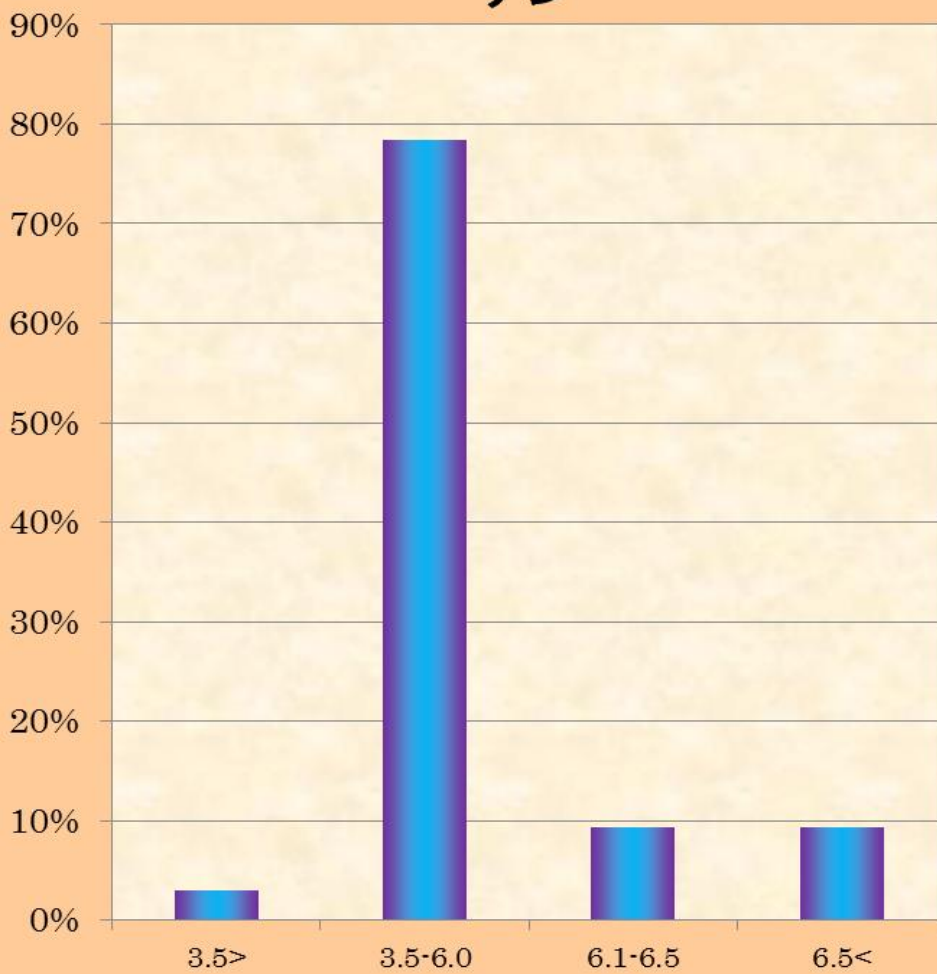
PTH-INT	60~180	人数
49	49以下	23
100	50~100	63
150	101~150	60
200	151~200	29
250	201~250	11
300	251~300	0
350	301~350	0
400	351~400	2
450	401~450	1
500	451~500	0
550	501~550	0
600	551~600	0
650	601~650	0
700	651~700	0
750	701~750	0
800	751~800	0
850	801~850	0
900	851~900	0
950	901~950	0
1,000	951~1000	0
1,050	1000以上	1



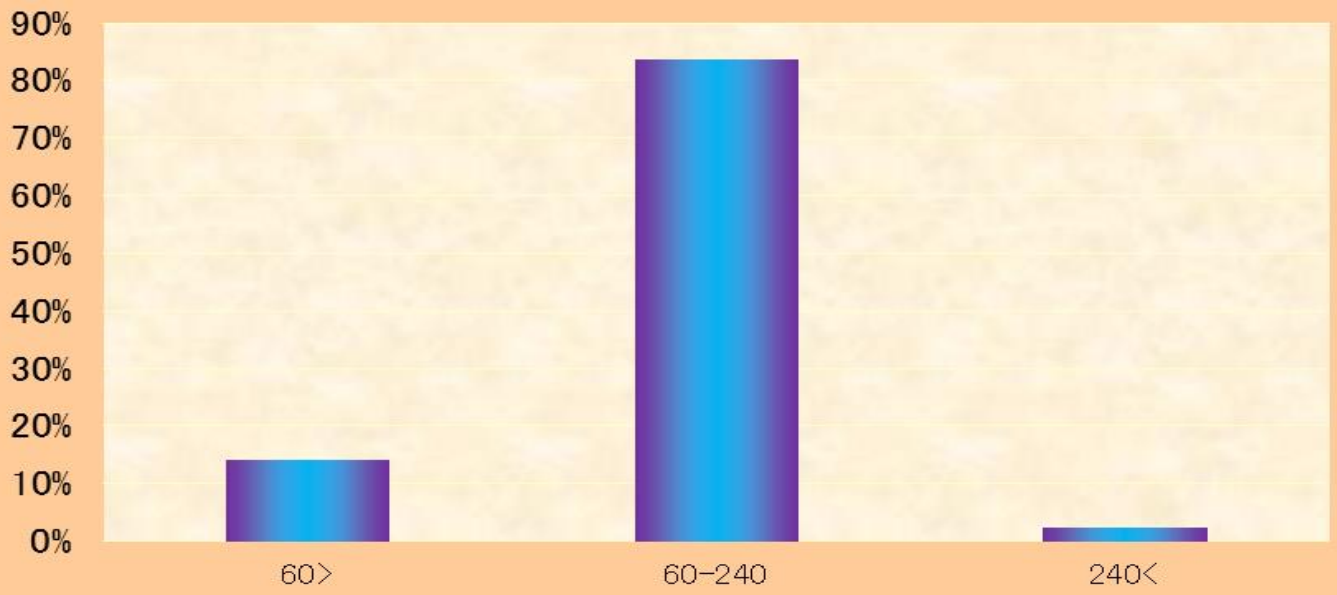
Ca×P



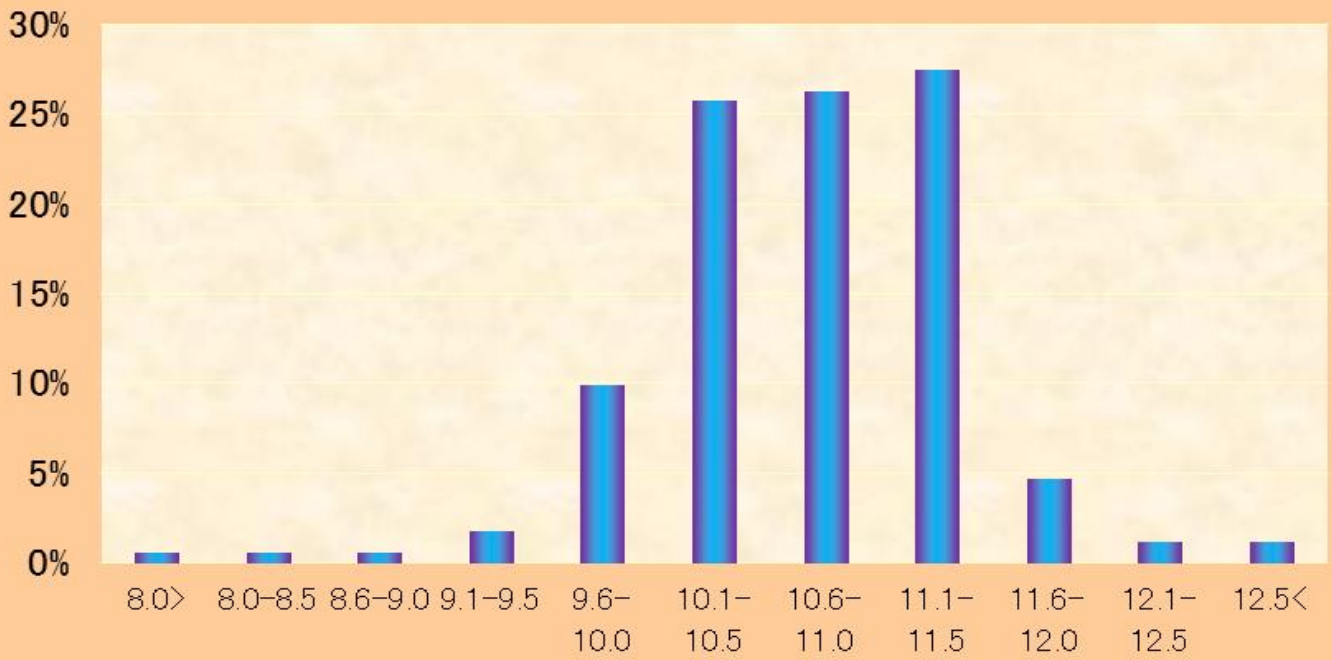
リン



PTH-IN



Hb



ALB

